

UF College of Medicine
PA Week

Physician Assistant Tributes



**CELEBRATING
EDUCATIONAL EXCELLENCE**

**SCHOOL OF PHYSICIAN ASSISTANT STUDIES
UNIVERSITY OF FLORIDA**



Janet Romrell has impacted more lives of people with Parkinson's disease than any other single clinician in the Fixel Institute over the last 20 years. The only way she knows how to care for people is to go above and beyond expectations. She creates a true connection with patients and families and she has been a hero to thousands.

*Michael S. Okun, M.D.
Department of Neurology*

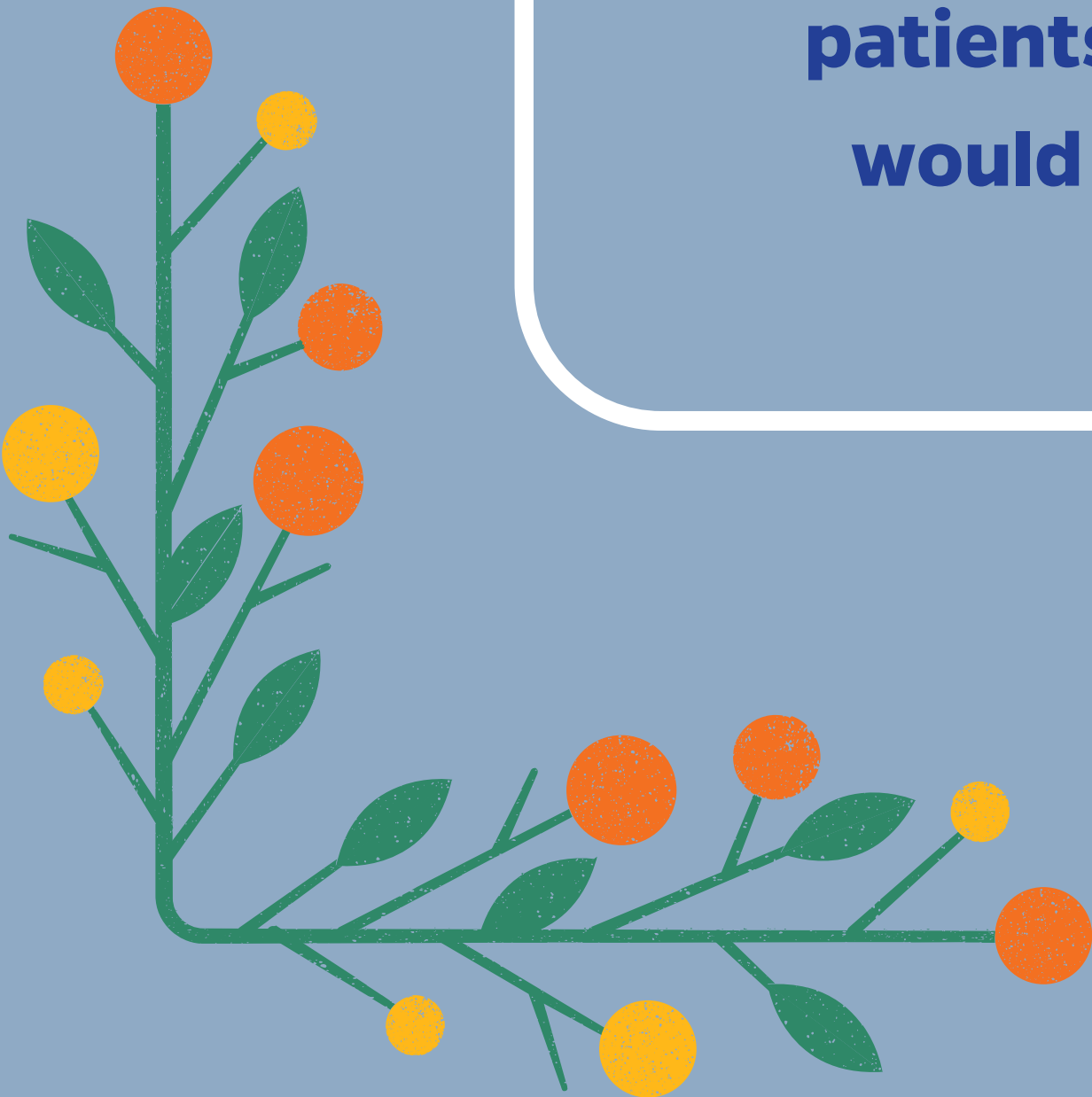




The hand and upper extremity PAs are an amazing group. They work well together and are the backbone that makes our clinical practice successful from seeing clinic patients, answering the countless calls and patient questions and making sure the patients get the best care possible. Without them, our service would fall apart. Thanks to them and ALL of the PAs for what they do!

Jay King, M.D.

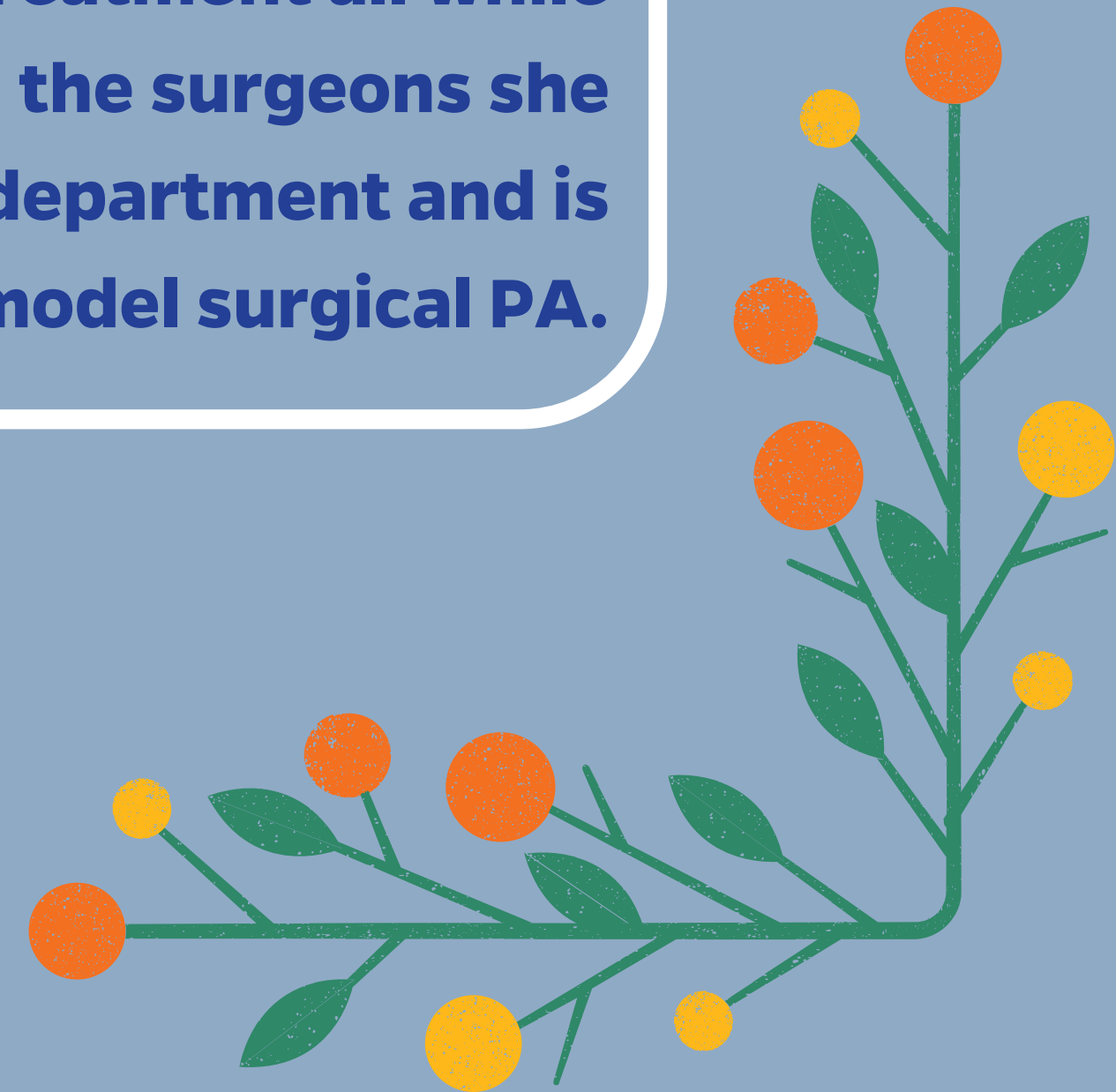
*Department of Orthopaedic
Surgery and Sports Medicine*





Kendra is a rockstar, and our practices would fall apart without her. She is a super woman. She will literally be calling in a prescription for a patient while joining a departmental meeting and taking her children to school at the same time. She is quick to diagnose complex neurosurgical patients and provide excellent treatment all while gaining the trust of patients, their families and the surgeons she works with. She mentors other learners in the department and is beloved by other services in the hospital. She is the model surgical PA.

*Maryam Rahman, M.D., M.S., FAANS
Lillian S. Wells Department of Neurosurgery*





Cheri Sellers has been working at the Student Health Care Center for the last 27 years, and she has a phenomenally broad clinical skill set. She can fill in for any of our MDs, PAs or APRNs in any of our clinics at the SHCC, including the acute care clinic seeing injuries, the women's health clinic and the primary care clinic. She has a wonderful sense of humor and serves our student population with incredible compassion and empathy. She is truly one of a kind.

*Jocelyn Gravlee, M.D.
Department of Community
Health & Family Medicine*





Matt Walser came to us from the orthopaedics department three years ago right before COVID-19 hit. He quickly switched gears and was a key leader in running the STP program for the University of Florida. In addition to his strong orthopaedic skill set, he is a master at anything operations. He was recently appointed assistant director of clinical operations at the Student Health Care Center. The positive attitude he brings to work every day is infectious.

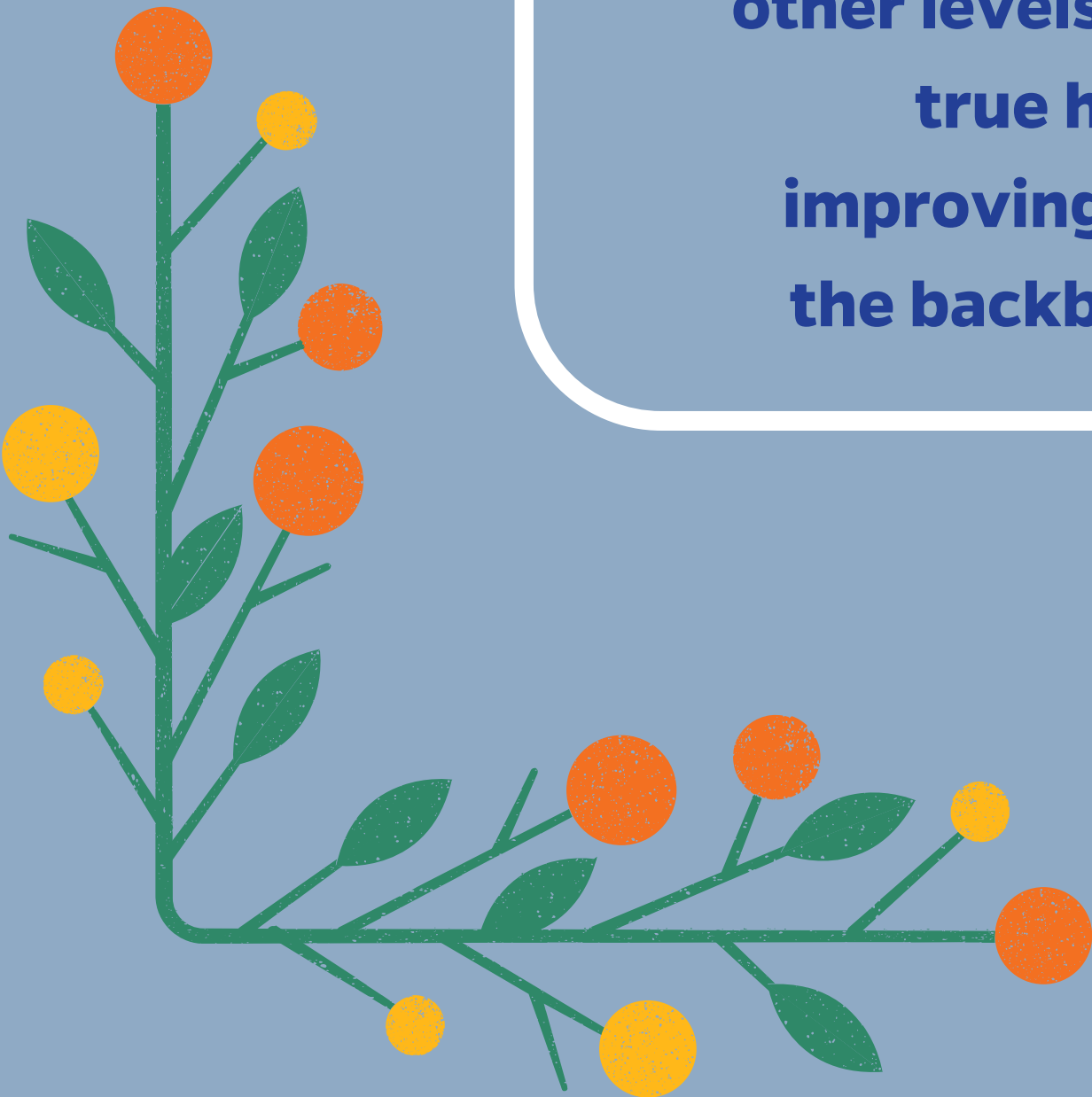
*Jocelyn Gravlee, M.D.
Department of Community
Health & Family Medicine*





Brandi Kenworthy, Windy Purtlebaugh, Suzy Holder and Isabella Camperlengo are a true testament to dedication, commitment and selfless sacrifices for stroke patients. They have worked long hours and sacrificed their personal times on weekends to help victims with stroke. They have gone beyond the call of duty, spending time with stroke patients who lack other levels of support. Their passion for expedited stroke care makes them true heroes. The neurovascular APPs continue to make strides toward improving care and ensuring that no stroke patient is left behind. They are the backbone of our stroke team and will always be held in highest regard.

*Anna Yuzefovich Khanna, M.D.
Department of Neurology*





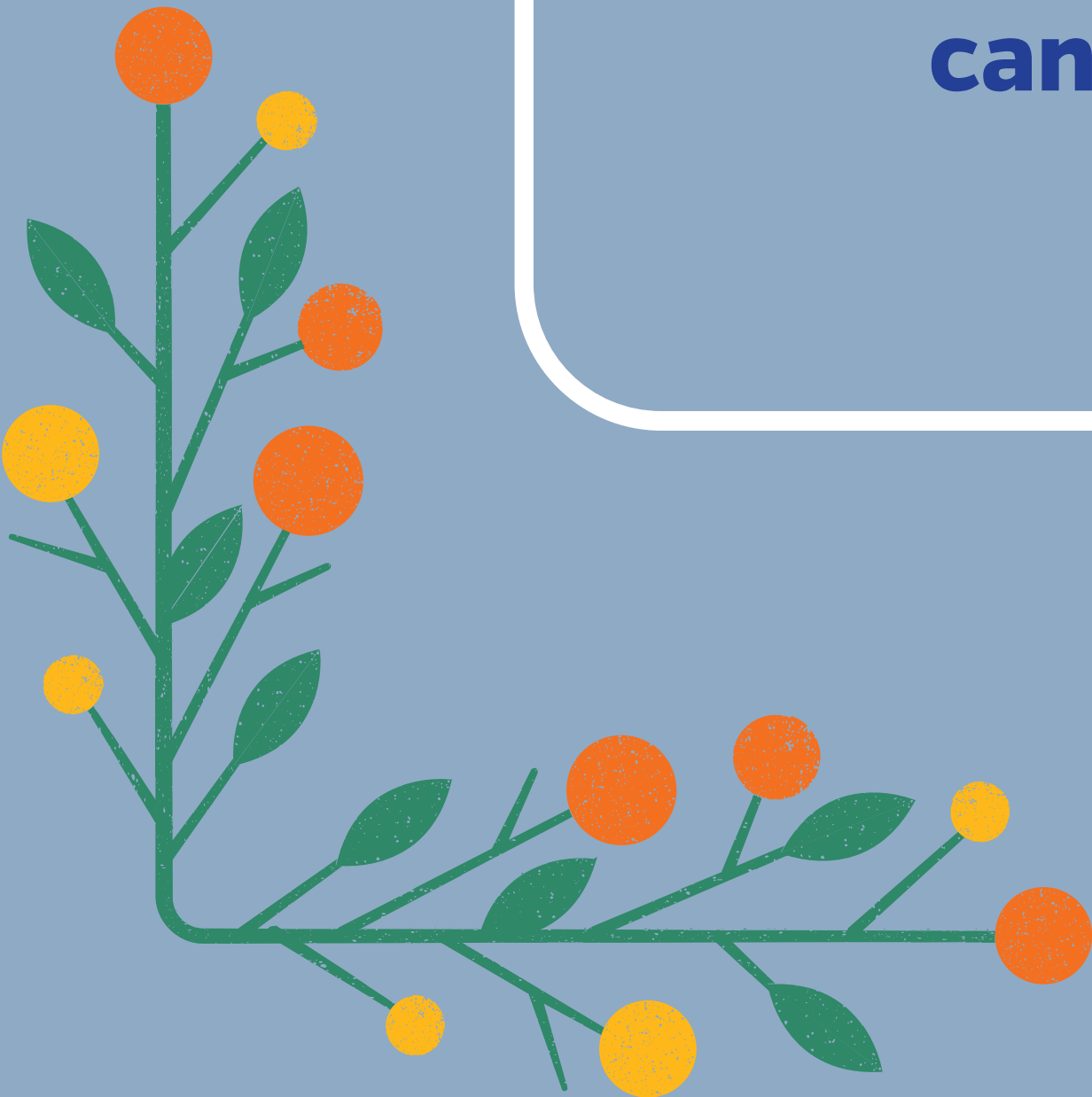
Jessica Schramm - Jes - is a natural leader and our lead APP. She is invaluable in her contributions to organizing, aligning, developing and scheduling our team; and above all, she is a gifted neurointensive care PA who deeply strives to learn more, always having a holistic care approach in mind.

*Katharina Busl, M.D.
Division of Neurocritical Care*





Kaitlyn Evans is our most recent PA to join our team. She starts off with an abundance of energy, joy and excitement to learn. We cannot wait to see what the career in NCC will bring with her on board!



*Katharina Busl, M.D.
Division of Neurocritical Care*



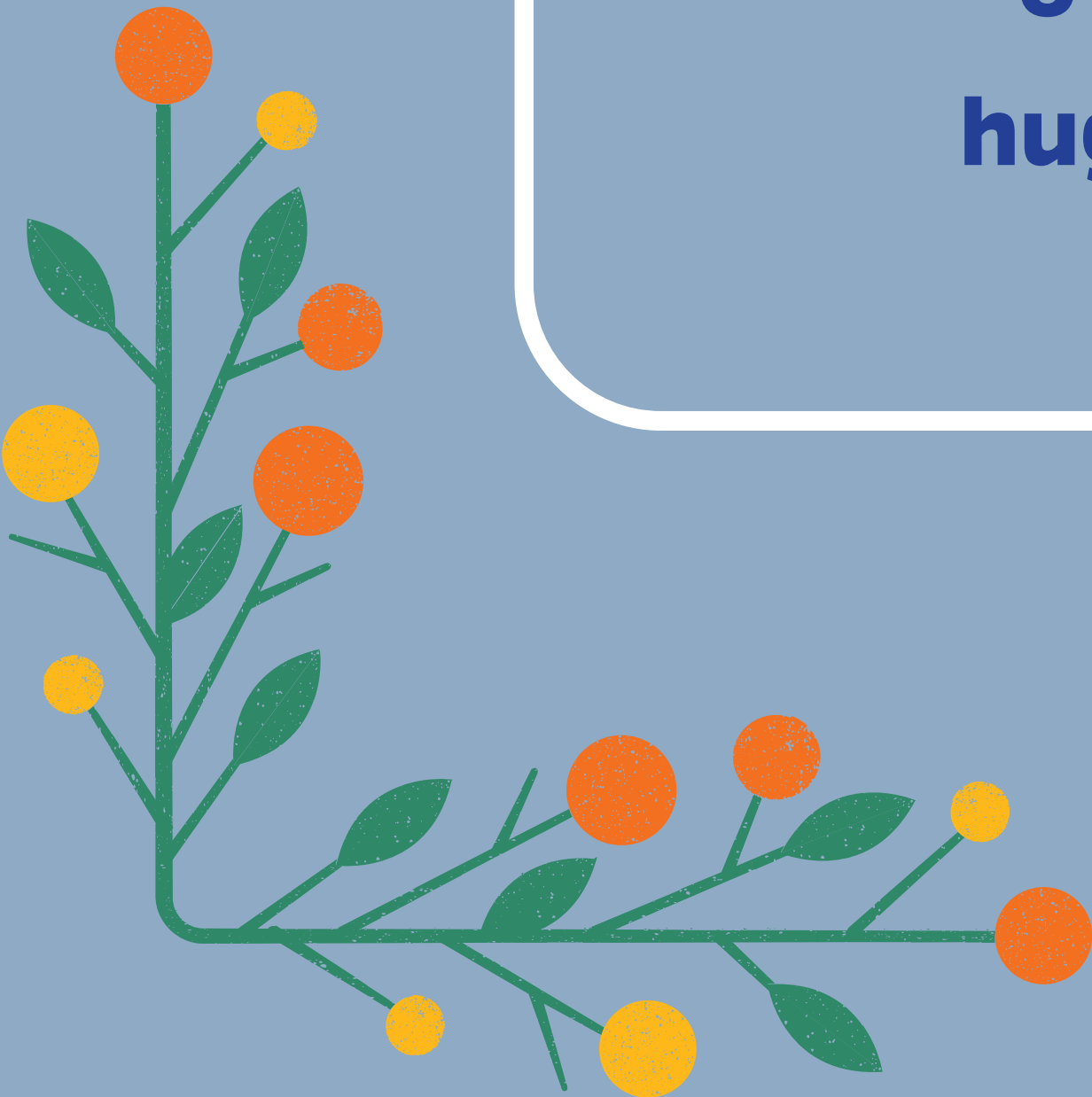
Amber Coca is such a strong force on the team. While she is so humble, she is a gem in neurocritical care and knows so much more than she would admit to herself. Amber is a neurocritical care PA who you would want your family member taken care by.

*Katharina Busl, M.D.
Division of Neurocritical Care*





Kevan Sharp joined our team only having met us (and vice versa) via Zoom. He delved right in, amazing us all, and is the fastest to win over the night shift nurses' trust, which is a huge tribute to his skills in taking care of our very sick neurocritically ill.



*Katharina Busl, M.D.
Division of Neurocritical Care*



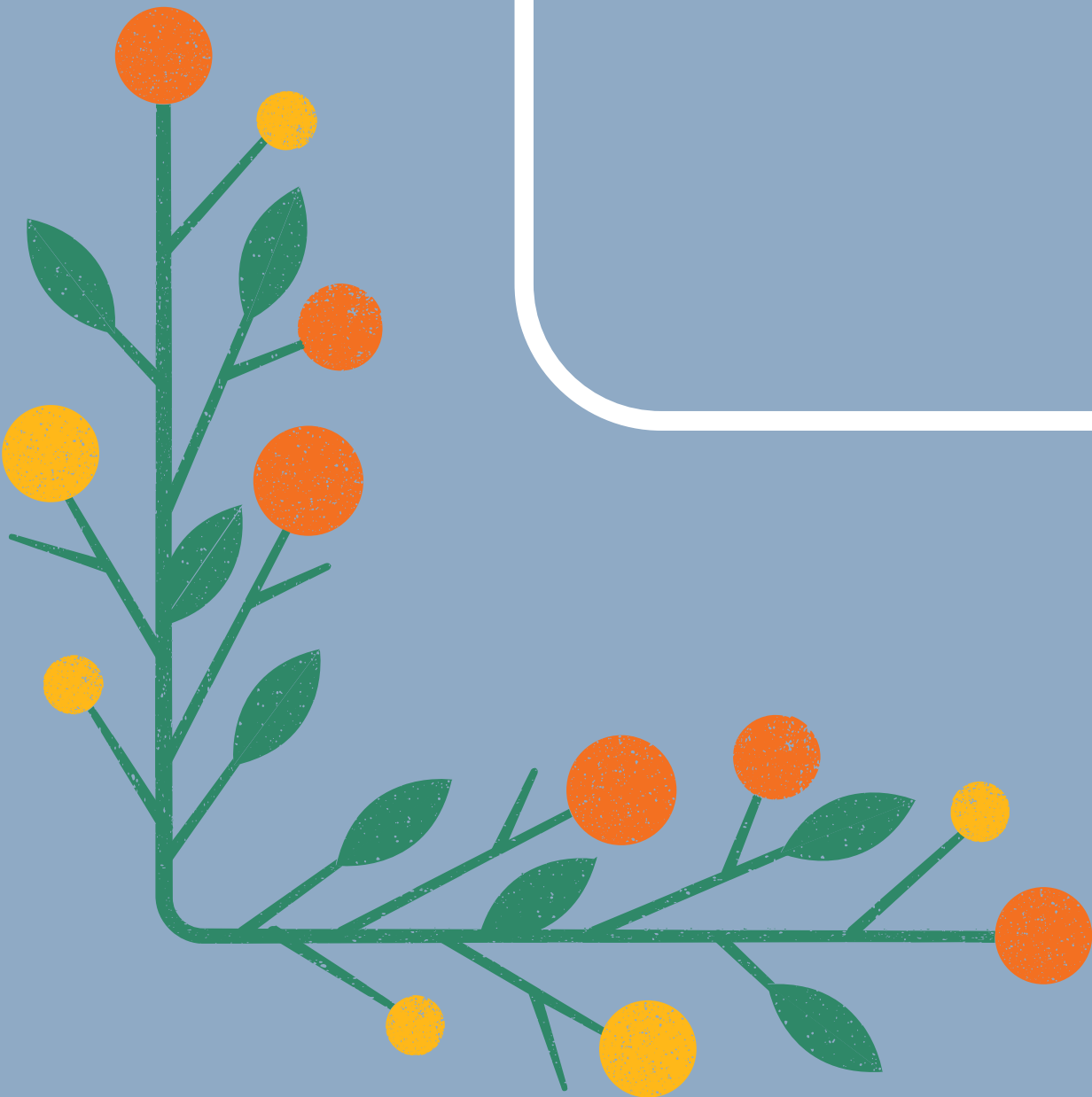
Nate Ordway joined us with additional background training in EEG. He has a wealth of knowledge and is a gifted teacher, both for scientific content as well as for procedures. We cannot wait to see Nate grow academically, fostering his love for education!

*Katharina Busl, M.D.
Division of Neurocritical Care*



“

Kensley Graves has the superwoman pose when she walks into the unit to full avail. She has grown so fast, and seeing her grow further as a neurocritical care provider is heartwarming. The neuroICU is her place!



*Katharina Busl, M.D.
Division of Neurocritical Care*



Scott Sacks is such a morale booster for the team. He always has a smile no matter the circumstances, and he is positively affecting not only our patients' lives. He is an eager learner and amazes us all with his steadfast dedication.

*Katharina Busl, M.D.
Division of Neurocritical Care*





Miki (Debbie) Rafanan has been with the Department of Orthopaedics for over 30 years. She is an amazing work horse doing the job of many people. She organizes the complex schedule for the entire division, sees walk-in patients 2 days a week and manages the ORs and clinics. Patients and staff love her. If this is not enough, she works after hours until 8 o'clock at night one to two times a week. I do not believe we could survive without her.

*Thomas Wright, M.D.
Department of Orthopaedic
Surgery and Sports Medicine*





Stacey Gleim is always upbeat, never complains, has a terrific attitude and does very high-quality work. Patients and staff equally love her. She is fiercely loyal and highly dependable. She knows when to reach out for help and takes ownership of any problems. She does all this while managing two young children at home.

*Thomas Wright, M.D.
Department of Orthopaedics
and Sports Medicine*





Kate Walker is extremely bright and is constantly looking for ways to improve processes. She does an outstanding job of managing patients. Likewise, patients and staff enjoy working with Kate. Kate is also balancing her work activities while managing two young children at home.

*Thomas Wright, M.D.
Department of Orthopaedics
and Sports Medicine*





Winnie Daughtry is the most recent addition to the hand to shoulder division. She is very thorough, has a great sense of humor and is an outstanding team player. Winnie manages our offsite location at Haile Clinic and really does an outstanding job. Patients and staff really love Winnie as well.

*Thomas Wright, M.D.
Department of Orthopaedics
and Sports Medicine*





The physician assistants in the division of nephrology, hypertension and renal transplantation are a group of outstanding and wonderful individuals. Not only do they tremendously increase the efficiency of our workflow, whether in the clinic, the dialysis unit, or on the inpatient service, but they have also proven instrumental in coordination of care with other providers, services and institutions. Their selfless attitude helps build strong bonds with the patients, especially those with more chronic illnesses, often making them a solid point of reference for many of the patients' health care needs. A number of the services we currently provide the patients with would have not been possible without this group of amazing individuals. They make sure our patients get the best care possible. Many thanks to them, and happy PA Week to all PAs!

Amir Kazory, M.D.

*Division of Nephrology, Hypertension
and Renal Transplantation*





Tori is an outstanding PA who has worked with our team for about a year. She is responsible for the care of our leukemia and lymphoma patients but takes really good care of all of our pediatric hematology/oncology patients. Tori takes ownership of her patients and does a great job to independently figure out what is going on with them. She also is a phenomenal team member, looking out for the well-being of her colleagues and doing small things to make their day better, like baking them brownies. We are all so glad to have her on our team!

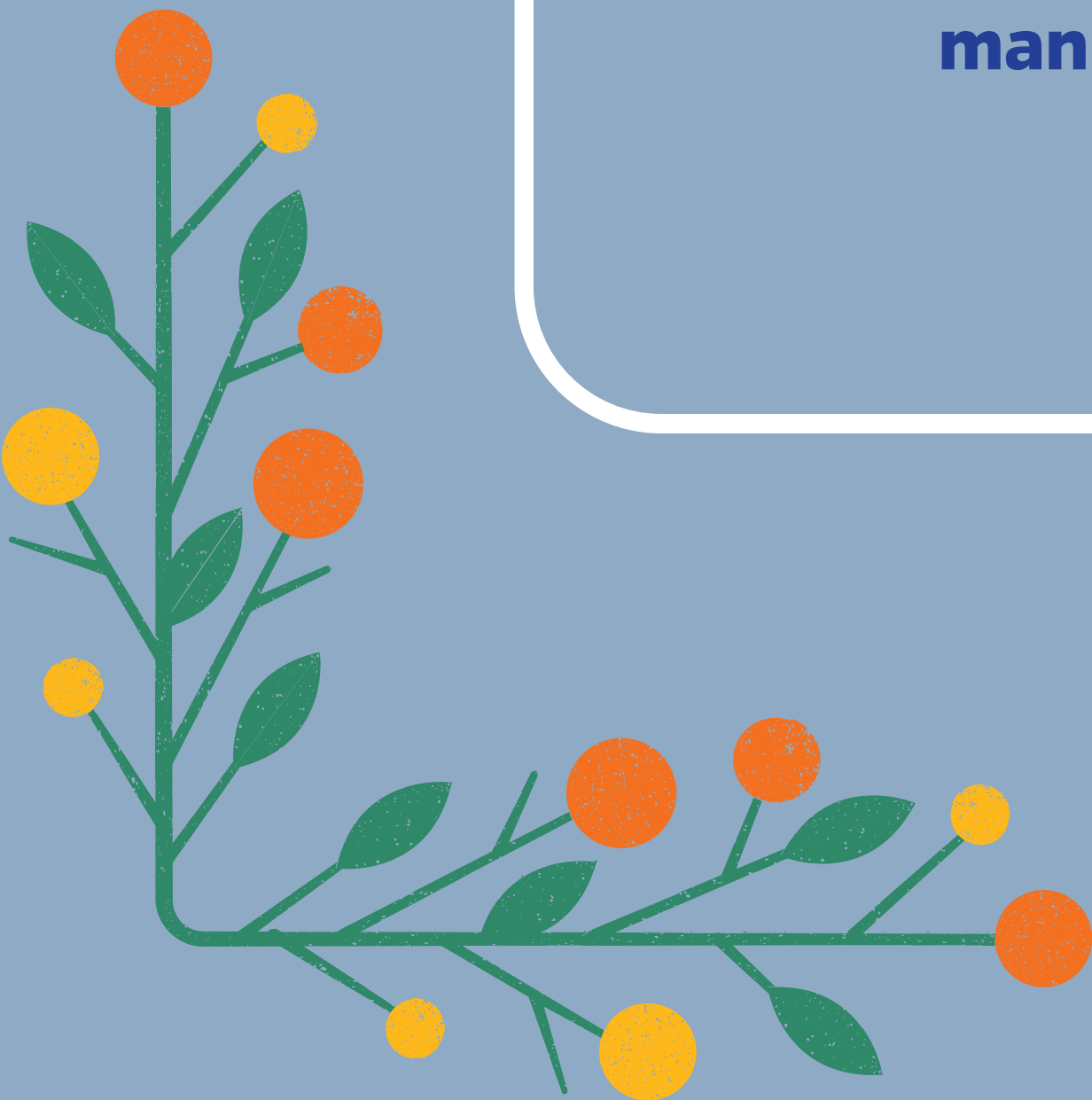
*Bill Slayton, M.D.
Division of Pediatric
Hematology and Oncology*





All the infusion nurses Scott Watson, PA-C, interacts with can benefit greatly from his expertise. Even when he has a busy clinic schedule, he never hesitates to answer any concerns, and he never treats us like a "bother." He is in positive spirits when he arrives at work and conducts himself in a very professional manner the entire day. I hope Scott is aware of the difference he makes on a daily basis at work as he has been an outstanding PA to us at the oncology clinic. Scott, we truly appreciate everything you do.

*Leah Bryant, R.N.
Oncology Clinic*





Over the past decade, the UF department of urology has amassed an outstanding team of 11 highly skilled advanced practice providers (APPs) who play an integral role in our department, especially in the patient care setting in the urology clinic. This outstanding group of providers work shoulder to shoulder with our faculty and residents and have garnered high respect and appreciation from our entire staff as well as their patients as significant contributors to our culture of timely, compassionate, patient-centered urologic care. Their activities extend beyond simply patient encounters and include a multitude of clinic-based minor surgical procedures as well as care within the inpatient setting.

In honor of Physician Assistant Week, I want to especially honor the four PAs in our department: Mitsu Andre, Jasmine Brown (graduate of the UF PA program), Annie Li (graduate of the UF PA program) and Betsy Stacy. These four outstanding PAs play a special role in our team in not only assisting with patient care visits in the clinic, but also serving the unique role as robotic surgical assistants in the operating room. In particular I want to acknowledge Mitsu Andre as our lead advanced practice provider who has shown incredible leadership and fortitude these past two years, especially during the COVID-19 pandemic. Great leadership often reveals itself during times of adversity, and this statement summarizes Ms. Andre's contributions. She independently took on the challenge of organizing clinic schedules of all providers during workforce shortages and on-boarding and training new APPs in the clinic and operating room, earning her a position as an integral member of the urology clinic leadership team who is responsible for mapping the future direction of our clinic reorganization and renovations. Ms. Andre is unanimously regarded as the 'go to' and most experienced APP by both her peers as well as her physician colleagues. This is an outstanding accomplishment for a young woman who grew up in the war-torn country of Haiti. In summary, on behalf of the entire faculty and staff of the UF department of urology, we celebrate Mitsu Andre and our physician assistants as well as our entire group of advanced practice providers.

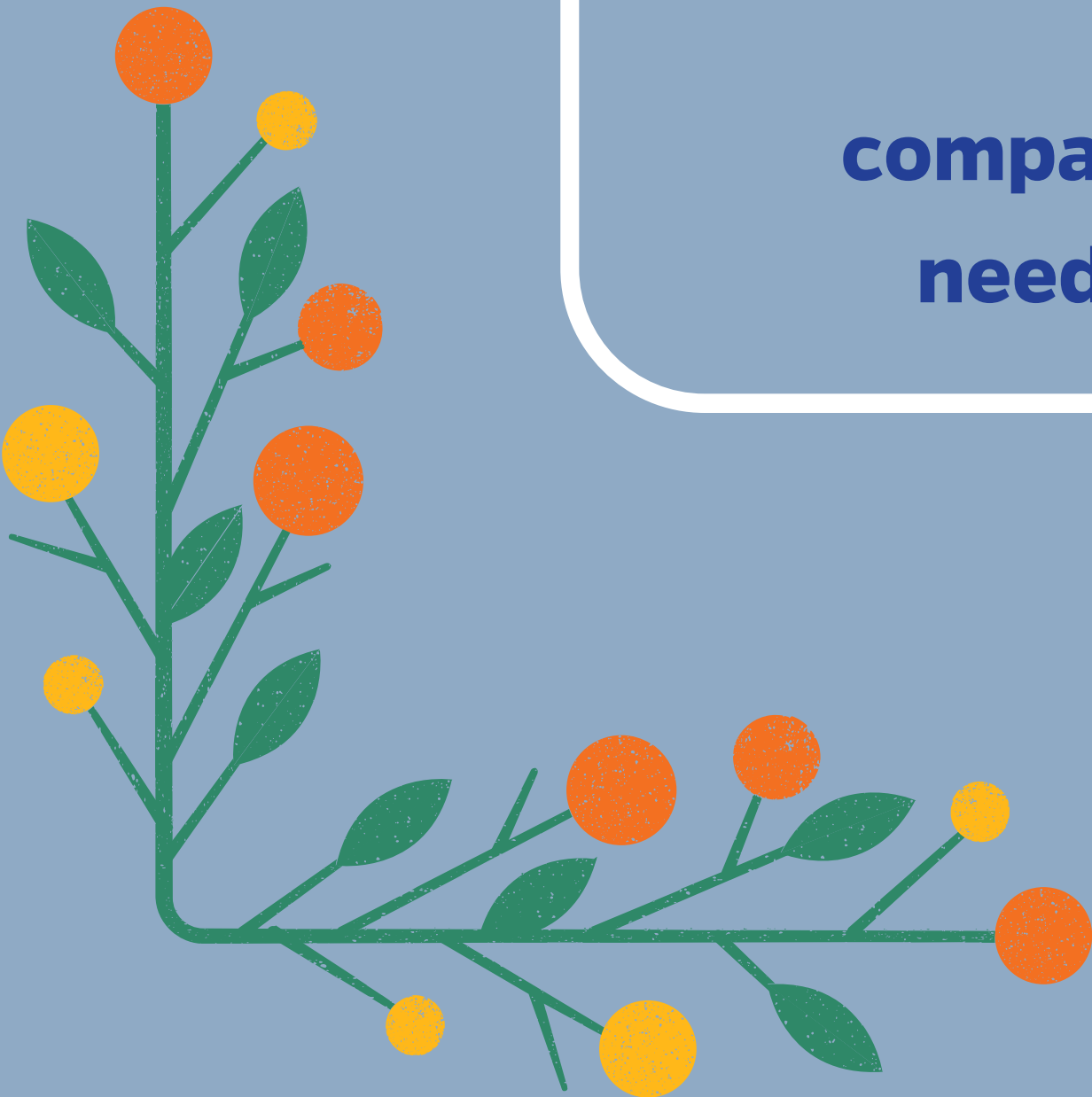
*Li-Ming Su, M.D.
Department of Urology*





Our PAs are integral parts of our team. We could not provide the care we do without their immense help. The orthopaedic sports medicine division has the "dream team" of physician assistants. Tarah, Susanna, Amanda, Stephanie and Troy are intelligent, motivated and compassionate and provide exceptional care to patients in need. We are incredibly lucky to have them on the team.

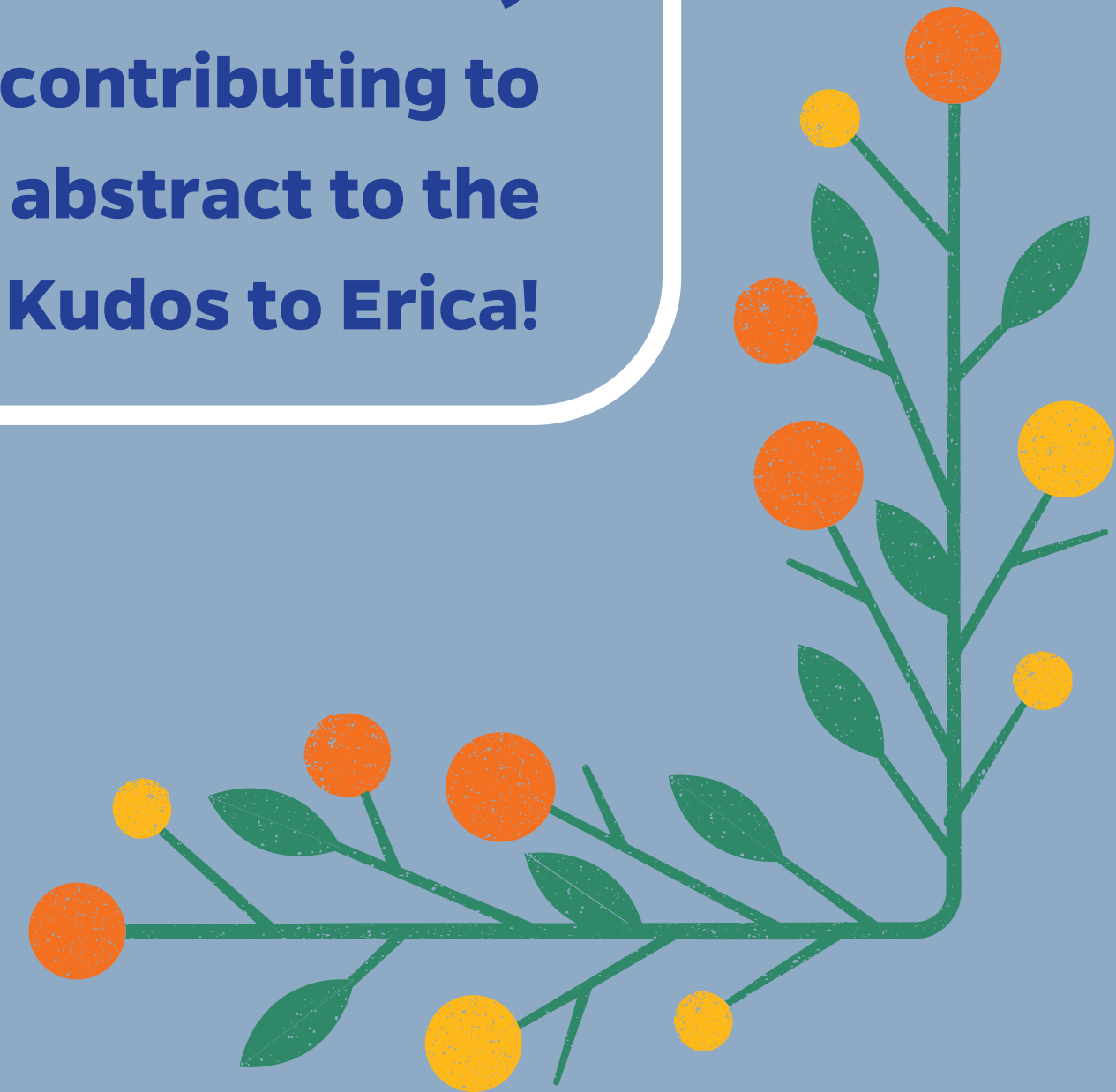
*Sports Medicine Division
Department of Orthopaedic
Surgery and Sports Medicine*





Erica Iketani joined the Pediatric Critical Care division a bit over two years ago directly after graduating from PA school. She has quickly become a key member of our team and always brings a positive attitude and professional demeanor. In addition to developing and honing her clinical skills, Ms. Iketani has already begun to pursue her academic interests by contributing to division QI efforts and submitting a first-author abstract to the Society of Critical Care Medicine. Kudos to Erica!

Division of Pediatric Critical Care





Amanda Wnek, PA-C, is diligent and professional with patient care. She is an asset to our department but most of all a great benefit to our patients and a wonderful colleague. Thank you for your kindness and your thoughtfulness you give to all of us and our patients — you help make us a great team!



Department of Dermatology



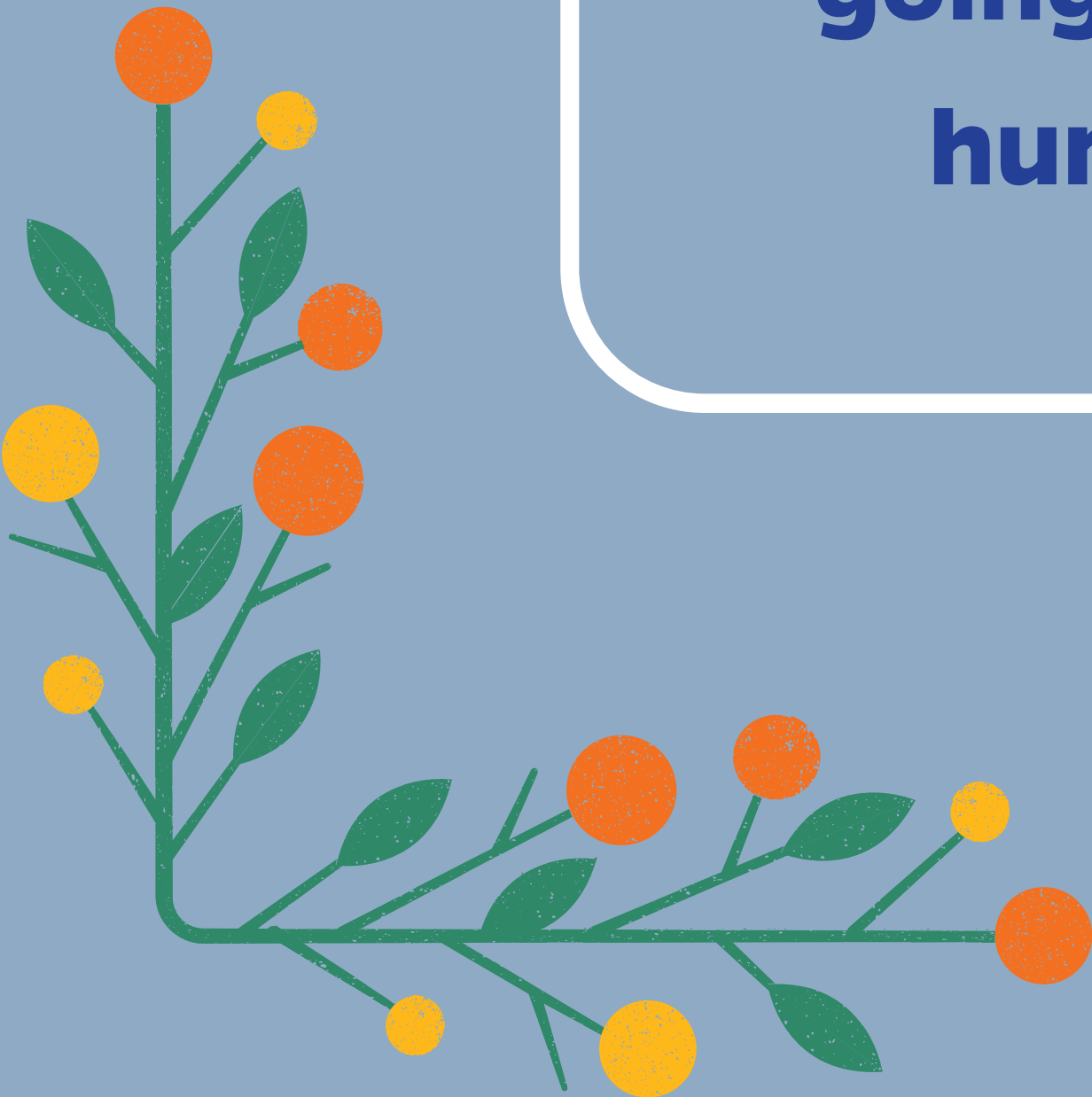
Scott Watson, PA-C, has always been unflappably calm and is always willing to help with orders we can't figure out and other such matters. He is a very valuable member of our team.

Anonymous



“

Wayne Denson, PA-C, is enthusiastic about seeing our patients and is easy going and friendly and has a great sense of humor. He is a valuable part of our team.



Anonymous



We are really appreciative of all our PAs in the division of IDGM. Our work would not be the same without them as they bring not only help to clinical care, but also good energy and vibes to each workday. Kudos to all our PAs: Daylee Bewak, Selina Iqbal, Lindsay Bouchard and Amber Lallo!

*Division of Infectious
Diseases & Global Medicine*





Daylee Bewak is reliable, efficient and hardworking. She has excellent communication skills and shows great empathy with patients and their families. As her attending, it is common for me to hear how grateful the patient and family are for her thoughtful care. Daylee is also very knowledgeable in our field. She is always finding ways to learn and improve her clinical abilities in infectious diseases.



*Division of Infectious
Diseases & Global Medicine*



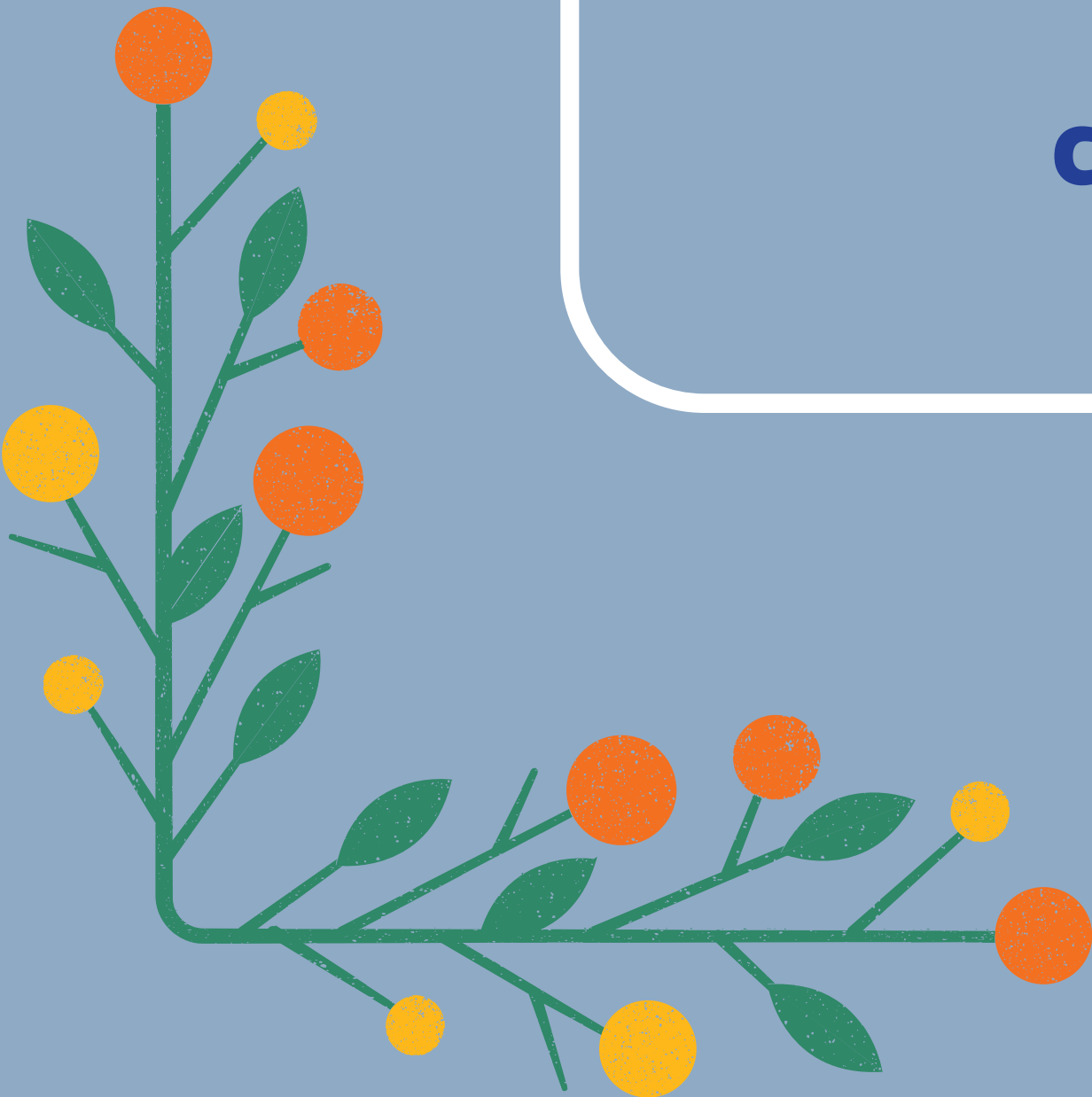
I only have the highest words of appreciation and praise for Daylee. She not only is helpful in clinical work but is just a pleasure to work with and takes the pressure off the attending. She is collegial and a very quickly learner who is constantly eager to learn more and add to her already impressive fund of knowledge. I enjoyed my time on transplant service mostly because I had a great colleague to discuss with. It's truly a privilege to have her with us.

*Division of Infectious
Diseases & Global Medicine*





Lindsay Bouchard and Selina Iqbal are helpful and responsive on the OPAT side, efficient and excellent with communication and following through.



*Division of Infectious
Diseases & Global Medicine*



Arthroplasty physician assistants have been crucial to and support our patient-centered and value-, outcome- and episode-based quality improvement projects that have markedly improved outcomes to a top performing center.

They enhance the entire continuum of care: new patient/preoperative/surgical/postoperative/long-term follow-up encounters, perioperative optimization, informed decision-making, opioid mitigation, patient-reported outcome measures (PROMs) collection, rehabilitation, inpatient care, disposition planning, patient tracking and communication, urgent evaluations to avoid emergency room visits, nonoperative MSK management, specialty referrals, trainee onboarding, clinical research and even registry data collection.

Physician assistants are a vital part of our arthroplasty program, and their dedicated involvement in clinical care and in all our missions is unmatched. Our excellent physician assistants continue to be examples of the highest degree of professionalism and patient-centeredness.

*Department of Orthopaedic
Surgery and Sports Medicine*





We would like to extend a BIG thank you to Jennifer Shifflet, PA-C, for all of her hard work since joining our team just one year ago!

Jennifer has been quick to learn our clinical and research procedures, familiarize herself with the diagnoses of our patient population and quickly and efficiently assist patients with all of their needs in the neuromuscular multidisciplinary clinic.

Additionally, Jennifer has helped to implement changes that help our clinic run more efficiently, thus improving the care provided to our patients. THANK YOU, Jennifer!



Department of Neurology



PAAs in the department of emergency medicine are an integral part of our clinical mission. They are valued partners and colleagues to our faculty and trainees. We are lucky to have an elite School of PA Studies as a part of the College of Medicine.

Department of Emergency Medicine



“

I would like to send a shout out to Derek Wilson, PA-C, in pediatric orthopaedic surgery at UF. He is greatly appreciated for his teamwork, great interpersonal skills, great communication skills and conscientiousness.

Nigel Price, M.D.

*Department of Orthopaedic
Surgery and Sports Medicine*





PA Emma Kissell is a tremendous asset to women's health. She has a joyful disposition, putting patients at ease, and works very well within a team environment. Emma consistently strives to acquire new knowledge and experience. She effectively balances the complexities and breadth of women's health with the focused attention required for subspecialty services. Emma is delightful and a truly valued member of our women's health team.

*Emily Weber LeBrun, M.D.
Department of Obstetrics & Gynecology*





Shannon Allen has been an amazing addition to our team. She is patient-centered, always striving to give the best possible care to our patients. She is a wonderful educator of our PA students. She utilizes evidence-based medicine and never hesitates to ask for help if needed. We are lucky to have her.



*Kay Roussos-Ross, M.D.
Department of Obstetrics & Gynecology*



Heather Nations was the first PA to join our department. She has worked hard to increase the awareness of women's health as an opportunity for PA students at UF. She is passionate about her work and always eager to expand her knowledge and practice of medicine.

*Kay Roussos-Ross, M.D.
Department of Obstetrics & Gynecology*

